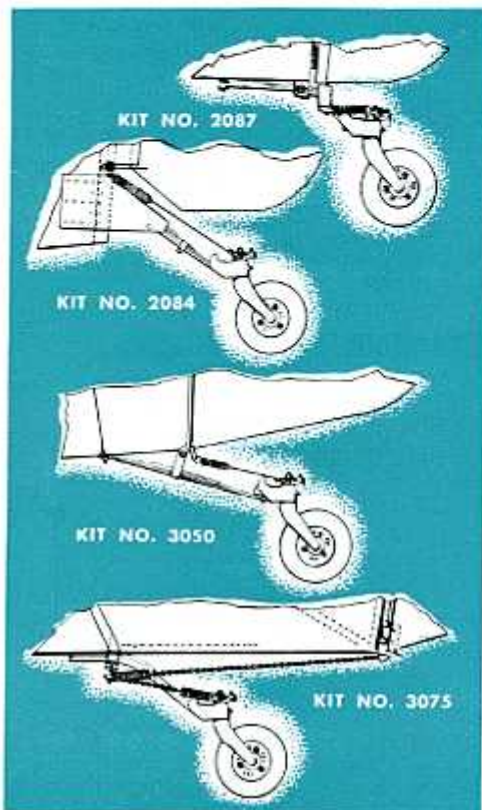


**INSTALLATION KITS FOR
3-24B TAIL WHEEL ASSEMBLIES**

Installation kits listed below include all the necessary parts for installing the Scott 3-24B Tail Wheel Assembly on the aircraft models indicated. Drawings illustrate manner in which installation is made.



**TAIL WHEEL ASSEMBLIES
STEERABLE OR FULL SWIVEL**

The 3000 Series Scott Steerable or Full Swivel Tail Wheel Assemblies are designed for installation on Aeronca, Cub, Luscombe, Rearwin, Globe Swift and other light aircraft equipped with 1 1/4" or 1 1/2" spring leaf skids.

These Tail Wheel Assemblies supersede the assemblies formerly manufactured under the designations CST-12, GC-15, TA-5, TA-8B, G-5A, AST-8, AST-8M, AST-8R, AST-4L, AST-4M and GLD-19.

Wheels are of strong cast magnesium and equipped with a 6 x 2 General Tire which incorporates a stranded steel wire bead which makes it impossible for the tire to roll off.



Standard Ball Bearings are furnished except on the No. 3175 Assembly which is equipped with Timken Bearings. Timken Bearings are optional on the 3000-A1 and 3000-B2 Assemblies at extra cost.

Bracket bushings are bronze and removable. Manganese silicon steel forks possess high strength-weight ratio... high tensile ferrous alloy brackets assure maximum strength. Axles are rifle drilled with Zerk grease fitting, grease seal and metal hub cap. Rudder arms and spring connectors are not supplied with these assemblies but must be ordered separately. All assemblies are shipped fully lubricated and ready for installation.

NO. 3000-A1 TAIL WHEEL ASSEMBLY—STEERABLE	\$15.75
NO. 3000-B2 TAIL WHEEL ASSEMBLY—FULL SWIVEL	15.75
NO. 3175 TAIL WHEEL ASSEMBLY—FULL SWIVEL. For use on Globe Swift. Consists of single arm forged fork and complete wheel assembly equipped with Timken Bearings. Bracket is not furnished—obtainable from airplane manufacturer. (No. 1800 Swivel Bushing is required with this assembly and must be ordered separately)	18.00
NO. 1800 Bronze Bushing used with No. 3175 Assembly	1.30

Scott Rudder Arms and Connector Springs for use with 3000 Series Tail Wheel Assemblies are listed on opposite page.

KIT NUMBER	FOR USE ON	PRICE EACH
3075	Cub J-4	\$9.25
2084	Luscombe series 8	2.25
3050	Porterfield FP65, CP65, CP55	3.00
2087	All Taylorcraft with leaf tail spring	2.25

TAIL WHEEL REPLACEMENT PARTS—FOR STEERABLE OR FULL-SWIVEL MODELS

Cast Wheel Assemblies with tire and bearings:

1871 for 7/16" Axle, used on all double arm models	\$6.75
1873 for 1/2" Axle, used on competitive models	6.75
1840 for 1/2" Axle (with 3 holes for attaching hub cap), used on No. 3175 Assembly	9.75
1869 for 1/2" Axle with 2 grease seals, used on all double arm models	9.75
Cast Wheel Assemblies less tire:	
1856 same as 1840, less tire	6.00
1865 same as 1871, less tire	3.00
1872 same as 1869, less tire	6.00
1874 same as 1873, less tire	3.00

Arm and Cam Assembly:
1709 used on No. 3175 Assembly

Axle Assemblies, with nut, grease fitting, cotter and 1 pair Garlock grease seals:
1381 1/2" Axle, used on competitive double arm models

Axle Nut Kit with an AN960-816 washer, nut and cotter:
1884 used on No. 3175 Assembly

Axle Conversion Kit, complete with metal hub caps, grease seals, elastic stop nut and washers:
1744 for 7/16" Axle, used on all double arm models

Axle 7/16", same as supplied with 1744 Kit: 1801 used on all double arm models	\$1.25
Bracket Adapter for reducing 1 1/2" bracket to fit 1 1/4" spring: 1478 used on all models with 1 1/2" bracket50
Bracket Assembly with bushings and grease fittings: 2077 used on 3000-A1 and 3000-B2 Assemblies	4.50
Bronze Bushings for brackets: 1800 used on 3000-A1, 3000-B2 and 3175 Assemblies	1.30
Bushing Caps: 1781 used on 3000-A1 and 3000-B2 Assemblies35
Fork—Steerable: 3001 used on 3000-A1 Assembly	5.00
Fork—Full Swivel: 3006 used on 3000-B2 Assembly	5.00
Grease Fittings (Screw Type) for bracket Alemite Fitting: 1641 used on 3000-A1, 3000-B2 and 3175 Assemblies16
Wheels—Cast, less bearings, tire and bolts: 1968 for all double arm models	2.25
1967 same as 1968, but drilled for embossed hub cap, used on 3175 Assembly	2.75

Bearings: 1421 7/16" Ball Bearings used on all wheels, per pair	\$1.20
1806 1/2" Ball Bearings used on all wheels, per pair	1.20
1883 1/2" Timken Roller Bearings used on all cast wheels, each	2.30
Bearing Bushings: 1864 for adapting 1/2" Timken Bearings for use with 7/16" Axles, per pair60
Bolts, three Fillister Head and Elastic Stop Nuts: 1875 for cast wheels on all models, set35
Grease Retainer—Hub Bearing: 1863 for all Timken Bearing wheels	1.10
Grease Retainer Spacer—Hub Bearing: 1867 for all Timken Bearing wheels10
Hub Cap—Embossed, three screws and felt grease shield: 1882 used on 3175 Assembly75
Hub Cap: 1364 used on all double arm models, per pair75
Hub Cap Spacer, permits use of cast wheel with 1/2" Timken Bearing on double arm fork with 1/2" Axle: 2504, per pair60
Tires: 1879 General Tire with wire bead	3.50



BRAKE PRESSURE UNITS — B-711 AND B-711D



These Scott Brake Pressure Units for actuating hydraulic brakes are reliable, trouble-free units which eliminate brake fluid leakage. Operate satisfactorily under extreme temperature conditions— -40° F. to $+165^{\circ}$ F. Provide smooth, positive braking action, immediate brake release and lack of brake drag.

The B-711 and B-711D are standard equipment on all Piper Airplanes and on some military aircraft. They can be installed to replace the obsolete type master cylinders formerly furnished on the older Piper Models. They can also be installed, with some mechanical adjustments, on other aircraft equipped with hydraulic brakes that do not require over .8 cu. in. displacement.

MODEL B-711 with pedal (weight, 21 oz.).....per pair **\$24.75**
MODEL B-711D, used with rod (weight 17 oz.).....per pair **\$24.75**

Complete Installation Kits with instructions are available for installing the B-711 unit in Piper Cubs. No kits are required for installing the B-711D.

KIT NUMBER	FOR INSTALLATION OF MODEL	IN	PRICE
J-3	B-711	J-3 Cub	\$5.75
J-5	B-711	J-5 Cub	8.50

TAIL SPRINGS



This three leaf tail spring assembly is designed to absorb maximum shock and provide the desired flexibility for aircraft landings. Made of high quality durable steel. Tail springs are specially designed to fit Cub J-3, J-5, Coupe and Cruiser; Aeronca, Taylorcraft and Luscombe.

NO. 6501 TAIL SPRING, fits Cub J-3, J-5 and Cruiser \$3.00
 NO. 6503 TAIL SPRING, fits Cub Coupe 3.00
 NO. 6504 TAIL SPRING, fits Aeronca 3.75
 NO. 6505 TAIL SPRING, fits Taylorcraft 3.75
 NO. 6506 TAIL SPRING, fits Luscombe 3.00

STREAMLINED WHEEL PANTS



These Streamlined Wheel Pants are made with a new type baffle which keeps clogging at a minimum. One-piece welded construction, finished in zinc chromate, with polished aluminum center moulding. Saves on propeller and windshield maintenance. Built for long, tough service.

NO. 6530 For Taylorcraft, per pair..... \$52.50
 NO. 6531 For Piper, per pair..... 52.50

AN6227B "O" RING HYDRAULIC PACKING



"O" Ring Hydraulic Packing is manufactured in accordance with Specification AN-P-79 and conform to Air Force-Navy Standard Drawing AN6227, Class B material.

AN NUMBER		PRICE EACH	AN NUMBER		PRICE EACH
FROM	THROUGH		FROM	THROUGH	
AN6227B1	AN6227B3	\$0.19	AN6227B41	AN6227B45	\$0.58
AN6227B4	AN6227B7	.22	AN6227B46	AN6227B52	.80
AN6227B8	AN6227B14	.24	AN6227B53	AN6227B55	1.00
AN6227B15	AN6227B21	.27	AN6227B56	AN6227B60	1.06
AN6227B22	AN6227B27	.30	AN6227B61	AN6227B65	1.24
AN6227B28	AN6227B35	.34	AN6227B66	AN6227B70	1.30
AN6227B36	AN6227B40	.41	AN6227B71	AN6227B75	1.88

The table above does not list our entire range of sizes. Larger sizes are available—prices on application.

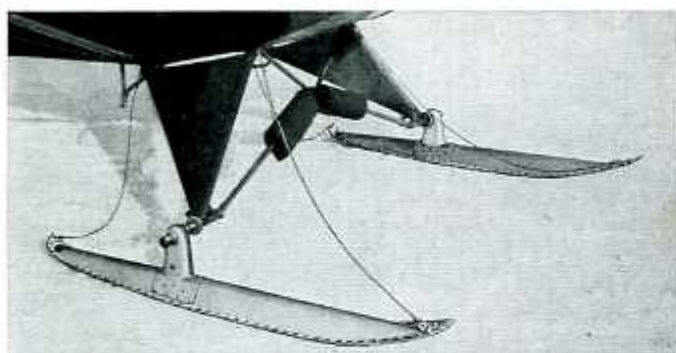
STREAMLINED WHEEL FENDERS



Designed to keep the airplane clean from mud and slush. Will save up to 50% on propeller maintenance, and makes windshields last longer by cutting down on cleaning operations. These fenders can be safely used the year round. Clamp rigidly to the landing gear without cutting or welding, and can be installed in thirty minutes. Leave tires and brakes open for inspection and servicing. Constructed of heavy gauge aluminum with strong steel mounting brackets. Finished in zinc chromate.

NO. 6517 For Piper Vagabond Models 15 and 17, per pair..... \$48.50
 NO. 6518 For Taylorcraft Model B, per pair..... 48.50
 NO. 6519 For Aeronca Models 7AC and 11AC, per pair..... 48.50
 NO. 6524 For Cessna Models 120 and 140, per pair..... 48.50
 NO. 6533 For Stinson 1947 and 1948 Models, per pair..... 48.50

SKIS AND SKI EQUIPMENT



Typical installation on undercarriage of Piper Cub.

These lightweight all-metal Aircraft Skis incorporate such features as a full rubber bushed axle bearing sleeve to cushion all strains; pedestal cross tubes to give even ski bottom position; substantial pull-off fittings at both ends of the main ski channel, and runner strap over the entire length of the ski bottom to provide directional control when taxiing. Ski bottoms are designed with a continuous curve upward from a point directly under the pedestal to the front, rear and sides to provide a pivot point for ground maneuvering of short turns, and to help prevent sticking or freezing. Standard models of these streamlined skis are available for all types and sizes of planes with gross weight capacities not exceeding 3500 lbs. Skis for larger aircraft can be custom built to individual specifications on special order; also retractable skis, combination wheel skis and retractable wheel skis. The table below lists standard model skis for various popular light aircraft, together with bushings, shock cord and rigging necessary for their installation.

AIRPLANE AND MODEL	SKI NUMBER	GROSS WEIGHT CAPACITY PER PAIR	APPROX. NET WT. PER PAIR	OVER-ALL DIMENSIONS INCHES	PRICE PER PAIR	RUBBER BUSHING	UNIVERSAL BUSHING KIT	UNIVERSAL RIGGING KIT	SPECIAL BRACKET	SKI KIT PRICE COMPLETE
Aerona (all 2-place models).....	A-1500	1500 lbs.	26 lbs.	6 x 64	\$74.00	53.25	57.25	524.00	\$108.50
	A-1500A*	1500 lbs.	28 lbs.	8 x 64	95.00	3.25	7.25	24.00	129.50
Aerona—Model 15AC.....	A-2500A*	2500 lbs.	56 lbs.	14 x 72	240.00	13.00	40.00	293.00
Bellanca—model 14-13.....	A-2500A*	2500 lbs.	56 lbs.	14 x 72	240.00	13.00	40.00	293.00
Cessna—models 120, 140.....	A-1500	1500 lbs.	26 lbs.	6 x 64	74.00	3.25	7.25	24.00	\$9.00	117.50
	A-1500A*	1500 lbs.	28 lbs.	8 x 64	95.00	3.25	7.25	24.00	9.00	138.50
Cessna—model 170.....	A-2500A*	2500 lbs.	56 lbs.	14 x 72	240.00	13.00	40.00	9.00	302.00
Cessna—models 190, 195.....	A-3500A*	3500 lbs.	60 lbs.	16 x 72	320.00	13.00	40.00	24.00	397.00
Commonwealth—models 185, 190.....	A-1500	1500 lbs.	26 lbs.	6 x 64	74.00	3.25	7.25	24.00	108.50
	A-1500A*	1500 lbs.	28 lbs.	8 x 64	95.00	3.25	7.25	24.00	129.50
Fairchild—models 24, M62.....	A-3500A*	3500 lbs.	60 lbs.	16 x 72	320.00	13.00	40.00	373.00
Funk—model B.....	A-1500	1500 lbs.	26 lbs.	6 x 64	74.00	3.25	7.25	24.00	108.50
	A-1500A*	1500 lbs.	28 lbs.	8 x 64	95.00	3.25	7.25	24.00	129.50
Luscombe—model 8.....	A-1500	1500 lbs.	26 lbs.	6 x 64	74.00	3.25	7.25	24.00	9.50	118.00
	A-1500A*	1500 lbs.	28 lbs.	8 x 64	95.00	3.25	7.25	24.00	9.50	139.00
Luscombe—model 11.....	A-2500A*	2500 lbs.	56 lbs.	14 x 72	240.00	9.50	40.00	12.00	301.50
Piper—models J-2, J-3, J-4, J-5, PA11, PA15, PA17.....	A-1500	1500 lbs.	26 lbs.	6 x 64	74.00	3.25	7.25	24.00	108.50
	A-1500A*	1500 lbs.	28 lbs.	8 x 64	95.00	3.25	7.25	24.00	129.50
Piper—models J5C, PA12, PA14.....	A-1850	1850 lbs.	29 lbs.	7 x 67	95.00	3.25	7.25	24.00	2.85	132.35
	A-2000	2000 lbs.	33 lbs.	9 x 67	120.00	3.25	7.25	24.00	2.85	157.35
	A-2000A*	2000 lbs.	38 lbs.	12 x 67	155.00	3.25	7.25	24.00	2.85	192.35
Seabee.....	A-3500A*	3500 lbs.	60 lbs.	16 x 72	320.00	9.50	40.00	9.50	379.00
Stinson—models 150, 165.....	A-2500A*	2500 lbs.	56 lbs.	14 x 72	240.00	9.50	40.00	18.00	307.50
Swift—models GC1A, GC1B.....	A-1850	1850 lbs.	29 lbs.	7 x 67	95.00	3.25	7.25	24.00	129.50
	A-2000	2000 lbs.	33 lbs.	9 x 67	120.00	3.25	7.25	24.00	154.50
	A-2000A*	2000 lbs.	38 lbs.	12 x 67	155.00	3.25	7.25	24.00	189.50
Taylorcraft—all models.....	A-1500	1500 lbs.	26 lbs.	6 x 64	74.00	3.25	7.25	24.00	108.50
	A-1500A*	1500 lbs.	28 lbs.	8 x 64	95.00	3.25	7.25	24.00	129.50

* Alcan Model—recommended where continuous deep snow operating conditions prevail.

SPECIAL SKI KIT FOR ERCOUCPE

The Model A-1500E Ski Kit for Ercoupe consists of complete ski equipment for individual Ercoupe models. The kit includes two main skis and one nose ski, together with all necessary riggers and installation fittings. Main skis measure 6" x 64". Gross weight capacity of a set is 1500 lbs.

This kit is designed for Ercoupes built after VJ day. When ordering Special Ski Kit for Ercoupe, be sure to specify the model on which skis are to be installed.

MODEL A-1500E, SKI KIT FOR ERCOUCPE, complete..... \$172.50

SKIS FOR HEAVIER AIRCRAFT

Skis for heavier aircraft and having the same general design and construction as models listed above can be custom built on special order. In addition to the features incorporated into the standard models they have a simplified, practical and effective shock absorbing arrangement built into the pedestals. Complete details, delivery and prices will be furnished on request. Specify aircraft make, year, and model number on your inquiry.

TAIL SKIS

The lightweight all-metal construction of these Tail Skis assures satisfactory operation under the severest winter conditions. Properly attached to the tail assembly, they provide the desired lift and protect the fuselage against crusted snow on the outside, accumulation of snow inside.

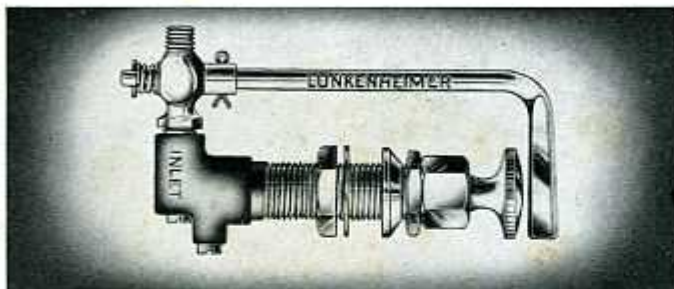
All tail ski models present a smooth streamlined appearance and embody the sturdy construction required for rugged service.

TAIL SKIS

TAIL SKI RIGGING

TAIL SKI NUMBER	FOR USE WITH SKI NUMBERS	GROSS WEIGHT CAPACITY	PRICE EACH	RIGGING NUMBER	PRICE EACH
AT-1500	A-1500	175 lbs.	\$21.75	ATS-1500	\$7.00
AT-1500A	A-1500A	175 lbs.	21.75	ATS-1500	7.00
AT-1850	A-1850	250 lbs.	27.50	ATS-2000	7.00
AT-2000	A-2000	250 lbs.	27.50	ATS-2000	7.00
AT-2000A	A-2000A	250 lbs.	27.50	ATS-2000	7.00
AT-2500A	A-2500A	320 lbs.	41.25	ATS-2500	10.00
AT-3500A	A-3500A	440 lbs.	49.50	ATS-3500	10.00

LUNKENHEIMER PRIMER



AN890-11 PRIMER AND COCK ASSEMBLY

The assembly pictured above consists of a No. 1664 Primer Pump and a No. 1665 Cock Assembly. The entire assembly conforms to Air Force-Navy Standard Drawing AN890. For detailed information on parts No. 1664 and 1665 see below.

AN890-11 PRIMER..... \$8.80



NO. 1664 PRIMER PUMP

No. 1664 Primer Pump consists of an AN890-11-1 Pump conforming to Standard Drawing AN890, and together with the No. 1665 Cock Assembly comprises the complete AN890-11 Assembly. Has a female pipe inlet and union outlet.

No. 1664 PUMP ONLY..... \$6.40

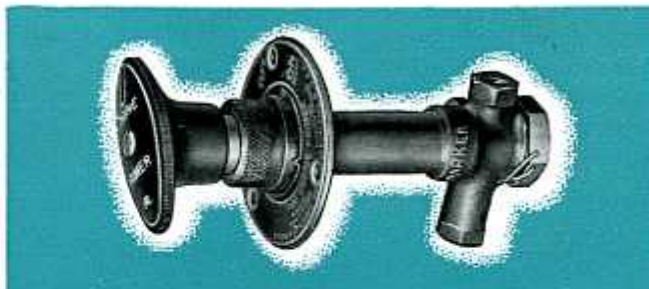


NO. 1665 COCK ASSEMBLY

Consists of an AN890-11-2 Extended Lever and an AN890-11-3 Cock fastened together with an AN380-2-2 Cotter Pin. Conforms to Air Force-Navy Standard Drawing AN890.

No. 1665 COCK ASSEMBLY..... \$2.40

PARKER PRIMERS



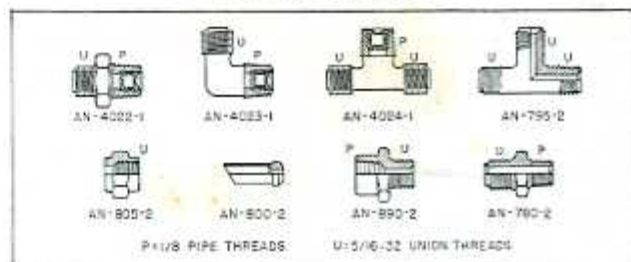
Single-plunger type, self-contained unit made in conformance to U. S. Air Force Spec. No. 95-28349 and U. S. Navy Spec. M-199. Delivers 1/8-ounce gasoline per stroke. Pump plunger locks in "OFF" position. One-piece body finished in battleship grey; bakelite handle is black with white lettering and markings. Indicator plates are plastic with black and red face and raised white letters. Furnished with 1/8-inch internal pipe thread outlets.

No. 401-1A SINGLE ENGINE PRIMER.
WEIGHT APPROX. 9.45 OZ..... \$21.00

No. 401-2A DUAL ENGINE PRIMER.
WEIGHT APPROX. 9.60 OZ..... 25.20

3- and 4-Engine Primers also available. Details on request.

PRIMER FITTINGS



AN NUMBER	DESCRIPTION	THREAD	PRICE EACH
AN780-2	UNION NIPPLE	1/8" x 1/8" - 32	\$0.40
AN795-2	UNION TEE	1/8" - 32	.95
AN800-2	UNION CONE	1/8" - 32	.115
AN805-2	UNION NUT	1/8" - 32	.115
AN890-2	UNION NIPPLE	1/8" x 1/8" - 32	.42
AN4022-1	DISCHARGE NIPPLE	1/8" x 1/8" - 32	.80
AN4023-1	DISCHARGE ELBOW	1/8" x 1/8" - 32	.90
AN4024-1	DISCHARGE TEE	1/8" x 1/8" - 32	1.15

FUNNEL

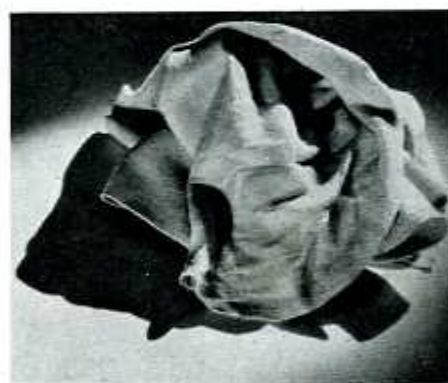


This handy funnel is ideal for separating water and other foreign matter from gasoline. It is a 10-inch straight side funnel made of 24 gauge galvanized sheet steel. A brass wire screen is soldered in the breast of the funnel, and a detachable ring for use with a chamois is inserted in the mouth.

NO. 7009-A FUNNEL..... \$5.00

Fire Extinguishers and Fire Extinguisher Fluids are listed on page 102 of this catalog.

CHAMOIS



A fine quality chamois for straining gasoline. Fits any funnel ordinarily used. It is of uniform quality, without defects, and is 18 inches by 24 inches in size.

No. 1345, EACH..... \$3.00

The Grimes Position Lights illustrated on this page are fully approved by the C.A.A. under Certificate No. 20. The Type E Wing Lights use special 21 candle power bulbs; all the rest are designed for use with 15 candle power bulbs. Lights are supplied complete with bulbs, for 6 and 12 volt systems. Also available for 24 volt systems on special order.

TYPE B POSITION LIGHTS

Standard type position lights generally used on most aircraft. Wing and tail lights have flat mounting pads. Wing lights mount on extreme ends of wings, tail light mounts on rudder or fin post. Double contact only. Weight: 7 oz.

STOCK NUMBER		DESCRIPTION	PRICE
6 VOLT	12 VOLT		
5710	5711	TYPE B WING LIGHT, RED.....	\$4.25 EACH
5712	5713	TYPE B WING LIGHT, GREEN.....	4.25 EACH
5714	5715	TYPE B TAIL LIGHT, WHITE.....	3.75 EACH
5716	5717	TYPE B LIGHTS, SET OF THREE....	12.00 SET

TYPE A POSITION LIGHTS

Wing lights mount forward of extreme end of the wing. Tail light is machined to fit inside of 1" O.D. x .035" or 3/4" O.D. x .028" tubing. Mounts on fin post. Double contact only. Weight: 6 oz.

STOCK NUMBER		DESCRIPTION	PRICE
6 VOLT	12 VOLT		
5718	5719	TYPE A WING LIGHT, RED.....	\$4.25 EACH
5720	5721	TYPE A WING LIGHT, GREEN.....	4.25 EACH
5722	5723	TYPE A TAIL LIGHT, WHITE.....	3.75 EACH
5724	5725	TYPE A LIGHTS, SET OF THREE....	12.00 SET

TYPE C POSITION LIGHTS

The Type C wing lights mount on the leading edge of the wing, and the tail light mounts on the trailing edge of the rudder. Weight: 5 oz.

STOCK NUMBER				DESCRIPTION	PRICE
SINGLE CONTACT		DOUBLE CONTACT			
6 VOLT	12 VOLT	6 VOLT	12 VOLT		
5748	5749	5726	5727	TYPE C WING LIGHT, RED.....	\$4.25 EACH
5750	5751	5728	5729	TYPE C WING LIGHT, GREEN.....	4.25 EACH
5752	5753	5730	5731	TYPE C TAIL LIGHT, WHITE.....	3.75 EACH
5755	5756	5732	5733	TYPE C LIGHTS, SET OF THREE....	12.00 SET

TYPE T WING LIGHT

For installation forward of the extreme end of wing on large ships. Light is made with double contact to fit 3/8-inch conduit and with single contact to fit 1/4-inch conduit. Weight: 5 oz.

STOCK NUMBER				DESCRIPTION	PRICE
SINGLE CONTACT		DOUBLE CONTACT			
6 VOLT	12 VOLT	6 VOLT	12 VOLT		
5740	5741	5742	5743	TYPE T WING LIGHT, RED.....	\$4.75 EACH
5744	5745	5746	5747	TYPE T WING LIGHT, GREEN.....	4.75 EACH

TYPE E AIRLINE WING LIGHT

For installation on extreme end of wing. These lights have found popular use . . . C.A.A. approved for all classes of aircraft from light planes to airline carriers. Light is smaller yet more powerful than previous models and uses little additional current. These advantages are obtained through the use of a special Grimes Reflector Lamp Bulb. Single contact only. Weight: 3 oz.

STOCK NUMBER		DESCRIPTION	PRICE
6 VOLT	12 VOLT		
5734	5735	TYPE E WING LIGHT, RED.....	\$3.00 EACH
5736	5737	TYPE E WING LIGHT, GREEN.....	3.00 EACH

POSITION LIGHTS



TYPE B—WING



TYPE B—TAIL



TYPE A—WING



TYPE A—TAIL



TYPE C
WING



TYPE C
TAIL



TYPE E



TYPE T—WING



TYPE S—TAIL
WITH BRACKET

TYPE S TAIL LIGHT

For installation on the trailing edge of the rudder. The Type S Tail Light is made with single contact only to fit 1/4-inch conduit. Complete with white lens. Single contact only. Weight: 4 oz.

STOCK NUMBER	VOLTS	DESCRIPTION	PRICE
5738	6	TYPE S TAIL LIGHT, WHITE, Without Bracket.....	\$1.50
5739	12	TYPE S TAIL LIGHT, WHITE, Without Bracket.....	1.50
5754	24	TYPE S TAIL LIGHT, WHITE, Without Bracket.....	1.75
A-2107	...	MOUNTING BRACKET ONLY.....	.40